

Pohnpei Research Expedition: 6th July – 17th August 2026

Since 2014, this field research time-series has built 12 years of continuous mesophotic field data in one of the most remote and pristine marine environments on the planet — yet also undergoing rapid environmental change. We will conduct ecological photogrammetry surveys, collect and redeploy research instrumentation, and run field experimental procedures — alongside reef cleanups and community outreach supporting local conservation.

Expedition Field Research – *Not just a dive trip!*

Whether you are a snorkeller, recreational diver, or technical diver, this expedition is designed to train you in the methods, mindset, and skills of hypothesis-driven field research. You'll learn at your skill level, build confidence and hours in the water and at depth, and leave with the skills to keep going deeper — qualifying you for wherever the science takes you next!

Certifications available:

- **MMR — Methods in Mesophotic Research:** Full certification for those attending the complete expedition (13th July – 4th August)
- **MMP — Methods in Mesophotic: Primer:** For those joining 7+ days

These expeditions have been developed to train the next generation of field scientists (any age), share the extraordinary beauty of mesophotic reefs and the communities who depend on them, and keep this critical long-term research alive.

Dive Schedule:

The dive schedule runs 3–4 days diving with 1 degas/surface interval day. Variation depends on weather and research mission — this is remote-location expedition diving, and flexibility is part of the adventure.

*A tentative schedule is provided on **page 4**.

Degas days are anything but downtime: explore the ancient ruins of **Nan Madol**, snorkel, hike, waterfalls, kayak, and discover islands and atolls that most people never reach.

Dive Operator: Nihco Marine Park

UNESCO Research Support: Marcela Foundation

SJR LLC Expedition Rates, Pohnpei FSM 2026

Days (Dives)	SCUBA & Snorkelling		CCR - AIR Dil		CCR - TRIMIX	
	Per/day(\$)	Total(\$)	Per/day(\$)	Total(\$)	Per/day(\$)	Total(\$)
7 (5 dives)	478	3,344	551	3,859	688	4,814
15 (10 dives)	446	6,694	520	7,796	628	9,419
23+ (16+ dives)	431	9,902	504	11,592	610	14,031

*Missed dives will not be reimbursed.

**Additional days will be charged at the 23-day rate.

Prices Include:

- Accommodation per person.
- Day rates inclusive except lunch & dinner.
- Cylinders: 80s for SCUBA, Air, NITROX.
- Airport transfers.
- Permits for research, and research diving and lodging.
 - Scientists wishing to conduct their own research may need to obtain their permits depending on the proposed study. Support and guidance will be provided.
- Research procedures, lectures, and safety training.

Technical Divers

- Cylinders: 80s for *bailout.
- Air, NITROX, *TRIMIX, Oxygen.
- Sofnolime® 797 by Molecular Products.

*Additional costs may be incurred at the organisers discretion if bailout is used/drained.

Prices Do Not Include:

- Flights and baggage fees.
- Non-US citizens will be required to have a 30-day visa on arrival (\$25 fee on departure).
- Meals.

*Basic equipment e.g., mask, fins, snorkel, BCD, regulators are available for hire.

Technical Divers

- Equipment: participants are responsible for their own dive equipment including on board CCR cylinders.

Eligibility and Requirements:

- DAN insurance (or equivalent)
- Highest diving certification (divers and freedivers only).
- Must sign expedition MOU, waiver and dive operator documentation.

Technical Divers

- CCR Divers: your own fully serviced rebreather and auxiliary equipment.
- Proof of 250 or more logged hours (CCR)*

*Dive within your limits: certification, experience, and your own ability.

Recommendations:

- Bring as much of your own equipment as you can – this is remote location diving.
- Purchasing Sharkbanz®

Getting to Pohnpei, FSM:

United Airlines (LINK HERE): Honolulu, Guam, and mainland USA- daily.

Nauru Airlines (LINK HERE): Brisbane, Australia – 1-day a week.

LINK HERE for flights from Japan and SE Asia – variable schedule.

**Purchase your tickets well in advance; flying to Pohnpei is expensive.

Payment Schedule

- To secure your place on the expedition a 50% payment of the full cost is required. This payment is non-refundable.
- The balance (50%) is due 1-month prior (6th June 2026) to the expedition.

Payment Options (USD)

Direct Deposit or Bank Transfer:

SJR LLC

Acc.# 1332357543

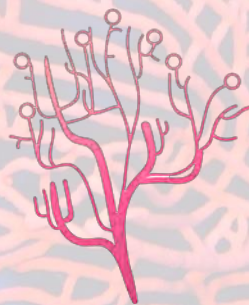
Routing # 321379656



Cheque/Check:

Please make a cheque to: **SJR LLC**

For additional payment options please contact HERE!



***Tentative Dive Schedule:**

July						
Monday	Tuesday	Wednesday	Thursday	Friday	Saturday	Sunday
6	7	8	9	10	11	12
Arrive	Set up	Dive: Pohnpei	Dive: Pohnpei	Dive: Ant Atoll	Dive: Pohnpei	Degas day
13	14	15	16	17	18	19
MMR Begin Dive pm	Dive: Pohnpei Lecture 1	Dive: Pohnpei	Dive: Pakin Atoll	Degas Day Lecture 2	Dive: Ant Atoll	Dive: Pakin Atoll
20	21	22	23	24	25	26
Dive: Pohnpei	Degas Day Lecture 3	Dive: Ant Atoll	Dive: Ant Atoll	Dive: Ant Atoll	Degas Day Lecture 4	Dive: Ant Atoll
27	28	29	30	31		
Dive: Pohnpei	Dive: Pakin Atoll	Degas Day Lecture 5	Dive: Pakin Atoll	Dive: Pohnpei		
August						
Monday	Tuesday	Wednesday	Thursday	Friday	Saturday	Sunday
					1	2
					Dive: Pakin Atoll	Degas Day Lecture 6
3	4	5	6	7	8	9
Dive: Pakin Atoll	MMR End/Depart	Dive: Ant Atoll	Dive: Ant Atoll	Dive: Ant Atoll	Degas Day	Dive: Pohnpei
10	11	12	13	14	15	16
Dive: Pohnpei	Dive: Pakin Atoll	Degas Day	Dive: Pakin Atoll	Dive: Ant Atoll	Dive: Pohnpei	Dive: Pohnpei
17	18					
Breakdown	Depart					

*Subject to change due to weather or logistic constraints.

